

**RUPES®**



**SKORPIO II**  
EXPERIENCE THE EXCELLENCE

**RUPES**



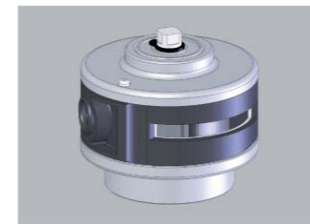
# SKORPIO II

## EXPERIENCE THE EXCELLENCE

The Skorpio II is what every random orbital sander operator needs—an extremely quiet tool that has tremendous power and low vibration!

The newly designed pneumatic Skorpio II is the quietest random orbital sander in its class. Further, it comes in a choice of orbit sizes to fit your particular application.

The body is coated with an anti-slip rubber for better handling, the throttle lever is designed to support the operator's wrist during operation and actually fits perfectly into the tool body to eliminate "pinch points", the internal balancing of the components results in extremely low vibration and the double row bearings insure greater life and smoother operation.



### NEW MOTOR

The new high performance motor is designed to provide the best power to weight ratio with a lower air consumption. Designed to minimize tool noise and to low vibration level, the new motor reduces internal friction for a higher power transfer ratio, simplified maintenance and longer tool life.



### DOUBLE ROW-BALL BEARINGS

A new double-row ball bearing system, designed specifically by the RUPES R&D team, results in longer bearing life, greater motor stability and lower vibration levels.



### ANTI SPINNING SYSTEM

The presence of the rubber shroud prevents the tool from operating in free rotation mode. This eliminates the risk of damage to the work surface from a true rotary motion. Further, the shroud allows for more efficient dust extraction by sealing the area between the tool's housing and the backing pad. (Not available on "NO VACUUM" models).



### NEW ERGONOMIC LEVER WITH RUBBER INSERT

The new throttle lever design, exclusive to RUPES, slides the throttle lever fulcrum forward when the lever itself is depressed. This action lifts the back end of the throttle lever and places it in a neutral position creating a stable and ergonomic support for the operator's hand. Improved handling and reduced vibration are results of the new design.



### EXTREMELY WELL BALANCED

RUPES R&D team dedicated significant time and effort to create a tool whose internal components are perfectly balanced. The result is a tool that is very low in vibration and ideal for high time-exposure applications.



### INTERCHANGEABLE BACKING PAD

The internal components of the Skorpio II are so well balanced that operators can actually change the size of the backing pad without compromising the low vibration level of the tool. It is now possible to choose the backing pad diameter that you need Ø 125 mm or Ø 150 mm, without changing tools!

### Ø 3 mm ORBIT



SKORPIO II - 3 mm: The 3mm orbit is designed for finishing applications that use grade P320 and higher abrasives. The small orbit, combined with the high rpm and proper abrasives, delivers a high quality finish that is perfectly prepared for paints and other coatings.

### Ø 6 mm ORBIT



SKORPIO II - 6 mm: Following several years of on-site research, Rupes R&D department found that a 6mm orbit is ideal for creating the best combination of material removal/ surface finish. The 6mm orbit is 20% more time efficient than the traditional 5mm orbit and, when used with the suggested abrasive grades between P120 and P320, generates the same high quality finish.

### Ø 9 mm ORBIT



SKORPIO II - 9 mm: The 9mm orbit tool is designed primarily for roughing and material removal applications. The tool is aggressive, but light in weight and ergonomically designed. The suggested range of abrasives is P60 to P120.

### NON VACUUM



No dust extraction capability

### CENTRAL VACUUM



Configured for external dust extraction systems

### SELF VACUUM



Integral dust extraction system (venturi)

## TECHNICAL DATA

### SKORPIO II Ø 125 mm



	Ø orbit Ø backing pad		Holes	Velcro	Vinyl	Working pressure bar/PSIG	Air consumption max	R.P.M.	Weight kg	Speed control	Spindle thread	Vacuum
	mm	mm										
RH223	3	125	MULTIHOLE	•		6,2/90	340	0-11.000	0,8	•	M8-F	-
RH226	6	125	MULTIHOLE	•		6,2/90	340	0-11.000	0,8	•	M8-F	-
RH229	9	125	MULTIHOLE	•		6,2/90	340	0-11.000	0,8	•	M8-F	-
Backing pad included 980.035N												
RH223/S	3	125	MULTIHOLE		•	6,2/90	340	0-11.000	0,8	•	M8-F	-
RH226/S	6	125	MULTIHOLE		•	6,2/90	340	0-11.000	0,8	•	M8-F	-
RH229/S	9	125	MULTIHOLE		•	6,2/90	340	0-11.000	0,8	•	M8-F	-
Backing pad included 980.035N												
RH223A	3	125	MULTIHOLE	•		6,2/90	340	0-11.000	0,8	•	M8-F	Central
RH226A	6	125	MULTIHOLE	•		6,2/90	340	0-11.000	0,8	•	M8-F	Central
RH229A	9	125	MULTIHOLE	•		6,2/90	340	0-11.000	0,8	•	M8-F	Central
RH223T	3	125	MULTIHOLE	•		6,2/90	340	0-11.000	0,8	•	M8-F	Self generated*
RH226T	6	125	MULTIHOLE	•		6,2/90	340	0-11.000	0,8	•	M8-F	Self generated*
RH229T	9	125	MULTIHOLE	•		6,2/90	340	0-11.000	0,8	•	M8-F	Self generated*
Backing pad included 980.035N												

### SKORPIO II Ø 150 mm



	Ø orbit Ø backing pad		Holes	Velcro	Vinyl	Working pressure bar/PSIG	Air consumption max	R.P.M.	Weight kg	Speed control	Spindle thread	Vacuum
	mm	mm										
RH253	3	150	MULTIHOLE SLIM	•		6,2/90	340	0-11.000	0,8	•	M8-F	-
RH256	6	150	MULTIHOLE SLIM	•		6,2/90	340	0-11.000	0,8	•	M8-F	-
RH259	9	150	MULTIHOLE SLIM	•		6,2/90	340	0-11.000	0,8	•	M8-F	-
Backing pad included 981.320N												
RH253/S	3	150	-		•	6,2/90	340	0-11.000	0,8	•	M8-F	-
RH256/S	6	150	-		•	6,2/90	340	0-11.000	0,8	•	M8-F	-
RH259/S	9	150	-		•	6,2/90	340	0-11.000	0,8	•	M8-F	-
Backing pad included 981.145N												
RH253A	3	150	MULTIHOLE SLIM	•		6,2/90	340	0-11.000	0,8	•	M8-F	Central
RH256A	6	150	MULTIHOLE SLIM	•		6,2/90	340	0-11.000	0,8	•	M8-F	Central
RH259A	9	150	MULTIHOLE SLIM	•		6,2/90	340	0-11.000	0,8	•	M8-F	Central
RH253T	3	150	MULTIHOLE SLIM	•		6,2/90	340	0-11.000	0,8	•	M8-F	Self generated
RH256T	6	150	MULTIHOLE SLIM	•		6,2/90	340	0-11.000	0,8	•	M8-F	Self generated
RH259T	9	150	MULTIHOLE SLIM	•		6,2/90	340	0-11.000	0,8	•	M8-F	Self generated
Backing pad included 981.320N												

## ACCESSORIES

### FILTER CARTRIDGE ASSEMBLY

Complete filtering KIT including:

- FILTER UNIT
- HOSE Ø 20 mm - 2 m



### FILTER UNIT

- The filter unit is transparent, allowing the operator to visually check the level of dust/dirt in the filter itself;
- The fitting diameter is 29 mm;
- The unit features a clip to fix the cable/hose of power tools;
- The unit contains a quick release safety feature.



### FILTER CARTRIDGE

- The material is washable polyester, resulting in long life if the filter is maintained properly;
- Fins create cyclonic air movement that creates less clogging of the filter and extends product life significantly.



Description	Code
Filter cartridge assembly	80.400/KIT
Filter unit	80.400/C
Filter cartridge	88.400
Hose Ø 20 mm - 2m	9.1255/C

### ANTISTATIC HOSE ASSEMBLY



Description	Size	Ømm	Tools	Code
Antistatic hose assembly	5m	29	pneumatic	9GAT02004/AS
Antistatic hose assembly	8m	29	pneumatic	9GAT02002/AS
Antistatic hose (in roll)		29	-	9.1264/30/AS

### HOSE ASSEMBLY



Description	Size	Ømm	Tool	Code
Hose assembly	5m	29	pneumatic	9GAT02004/C
Hose assembly	8m	29	pneumatic	9GAT02002/C
Evaflex hose (in roll)	30m	29	-	9.1264/30
Evaflex hose (in roll)	30m	25	-	9GT03047/30

Follow us

